

Available Immediately



Spirit of Texas

1100 West Main, Tomball, Texas 77375

LOCATION

Major Hospitals

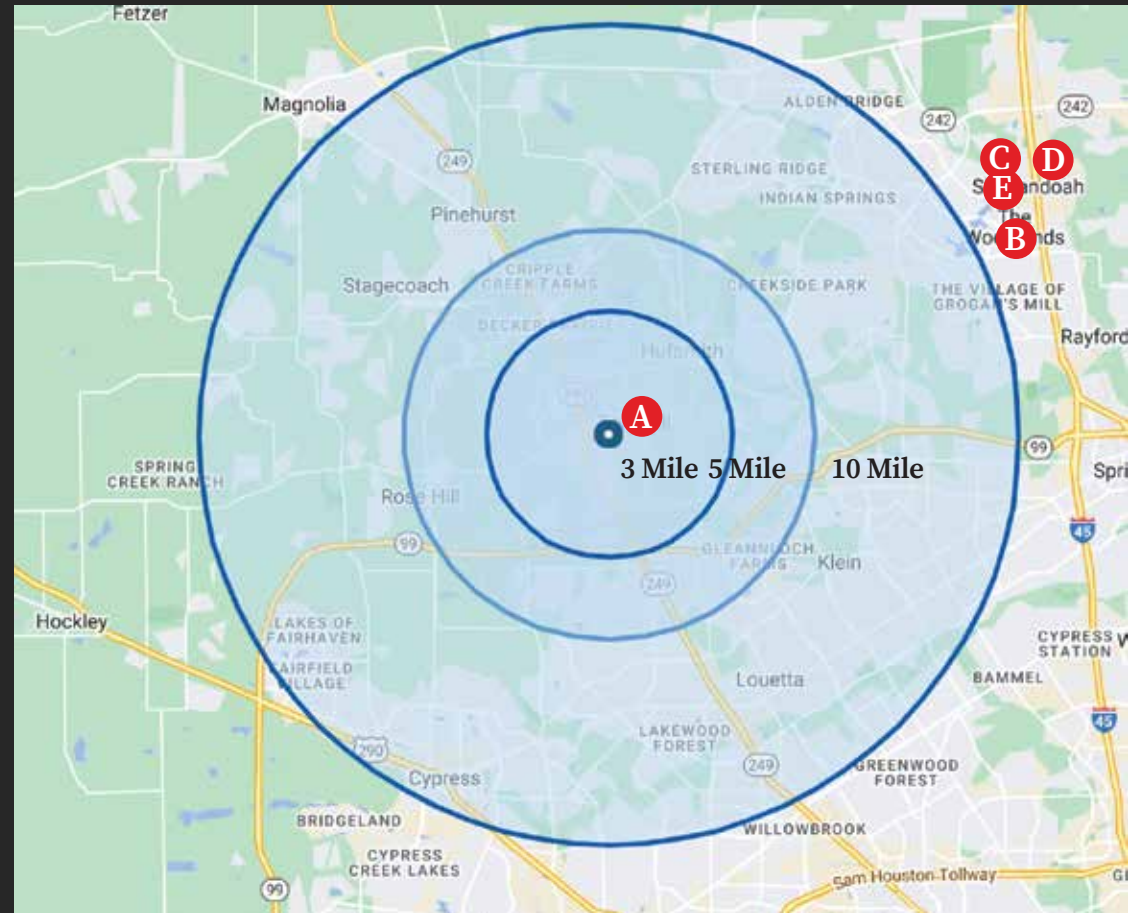
- A** Tomball Hospital..... 4 miles
- B** Memorial Hermann-The Woodlands..... 17 miles
- C** CHI St. Luke’s Hospital- The Woodlands.... 19 miles
- D** Methodist Hospital- The Woodlands..... 19 miles
- E** Texas Children’s- The Woodlands..... 19 miles

Major Highways

- Hwy 45..... 3,261 ft
- Hwy 249..... 17 miles
- Hwy 2978..... 8 miles
- Toll Road 99..... 6 miles

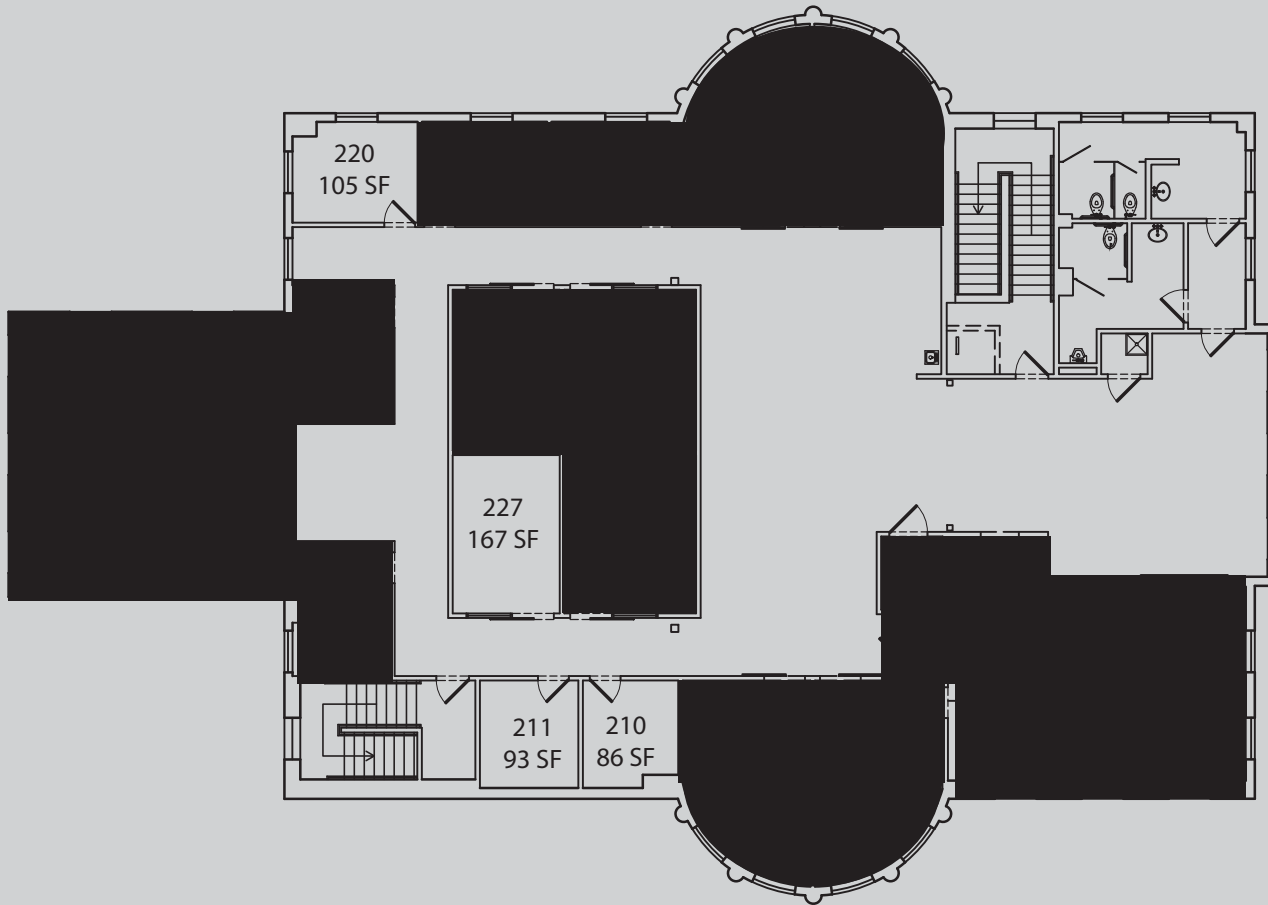
Commute Destinations

- George Bush International Airport..... 30 miles
- Downtown Houston..... 36 miles
- Hobby Airport..... 45 miles
- Conroe..... 23 miles



DEMOGRAPHICS & FLOOR PLANS

Availability



	1 Mile	3 Mile	5 Mile
POPULATION			
2023 Estimate	5,315	21,350	102,879
2028 Projection	5,355	22,035	108,309
Growth 2023-2028	.75%	3.21%	5.28%
HOUSEHOLDS			
2023 Estimate	2,325	8,092	35,885
2028 Projection	2,335	8,334	37,838
2023 Average Household Income			
	\$61,924	\$92,314	\$126,714

RATES

BASE RENT: TBD
OPEX: TBD

Available

Not Available

Spirit of Texas

1100 West Main, Tomball, Texas 77375



For More Information

TJ Fry

Director of Leasing

Phone: 832.721.6501

Email: tj.fry@pinecroftrealty.com

PINECROFT
REALTY



